



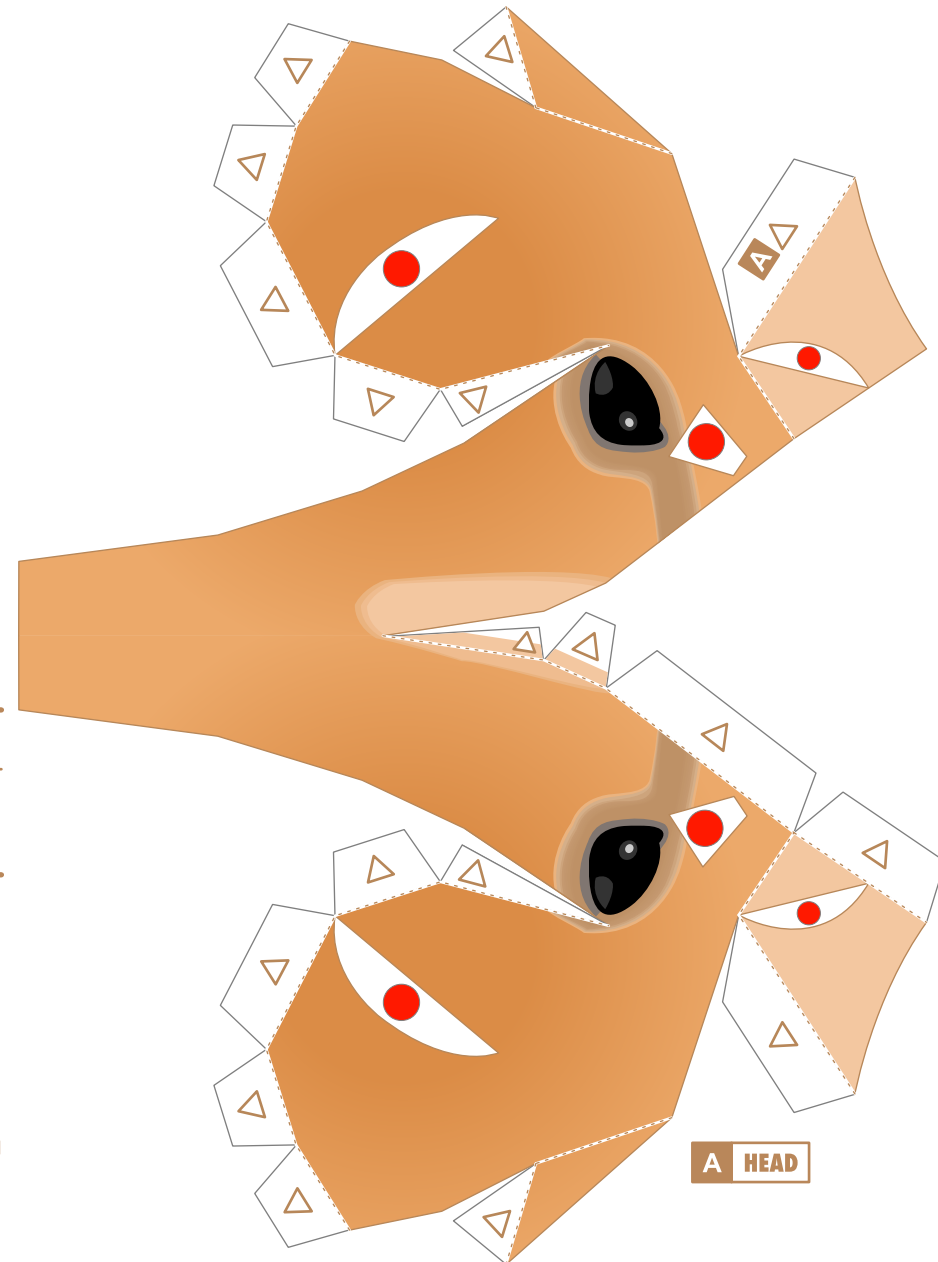
## Chihuahua (smooth coat)

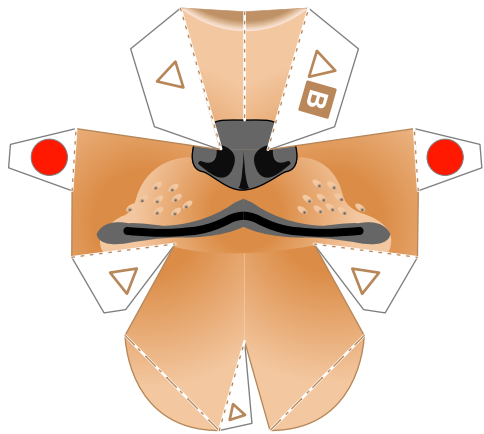
**Height:** 15 to 23 cm    **Weight:** 1 to 3 kg  
**Origin:** Central and North America (United States and Mexico)  
**Personality:** Friendly, extremely curious, brave, loyal

The Chihuahua is thought to be a descendant of a breed of dog called the Techichi. The Techichi was the dominant breed in the 9th century in the area that is now Mexico. The Techichi was a pet of the Toltec people. The Techichi was not only a pet to the Toltecs and the Aztecs, but also was important for religious reasons. It was believed that if Techichi were cremated with the dead, the Techichi would take on the burden of the deceased person's sins and turn away the anger of the gods. Further, it was believed that the Techichi would protect the souls of the dead from evil spirits, and lead them to their final destination in the afterlife.

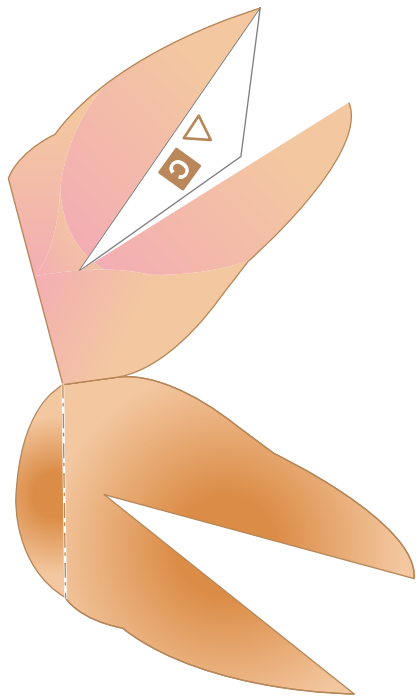
The Chihuahua of today is thought to be a cross between descendants of the Techichi and a hairless dog called the Chinese Crested Dog.

There are two types of coat found in Chihuahuas - the Long Coat variety has long hair, while the Smooth Coat variety has short hair. The hair of the Long Coat is sometimes curly.

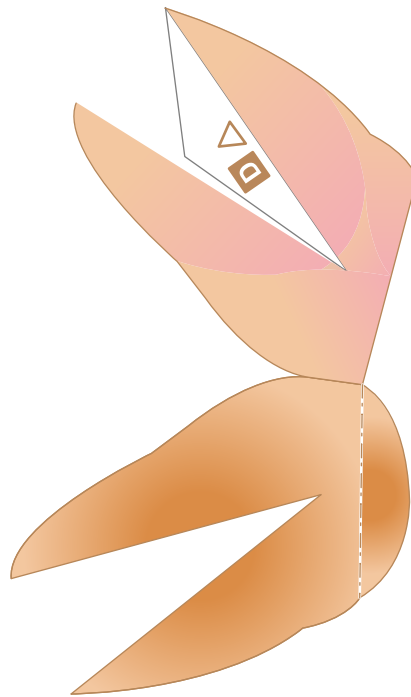




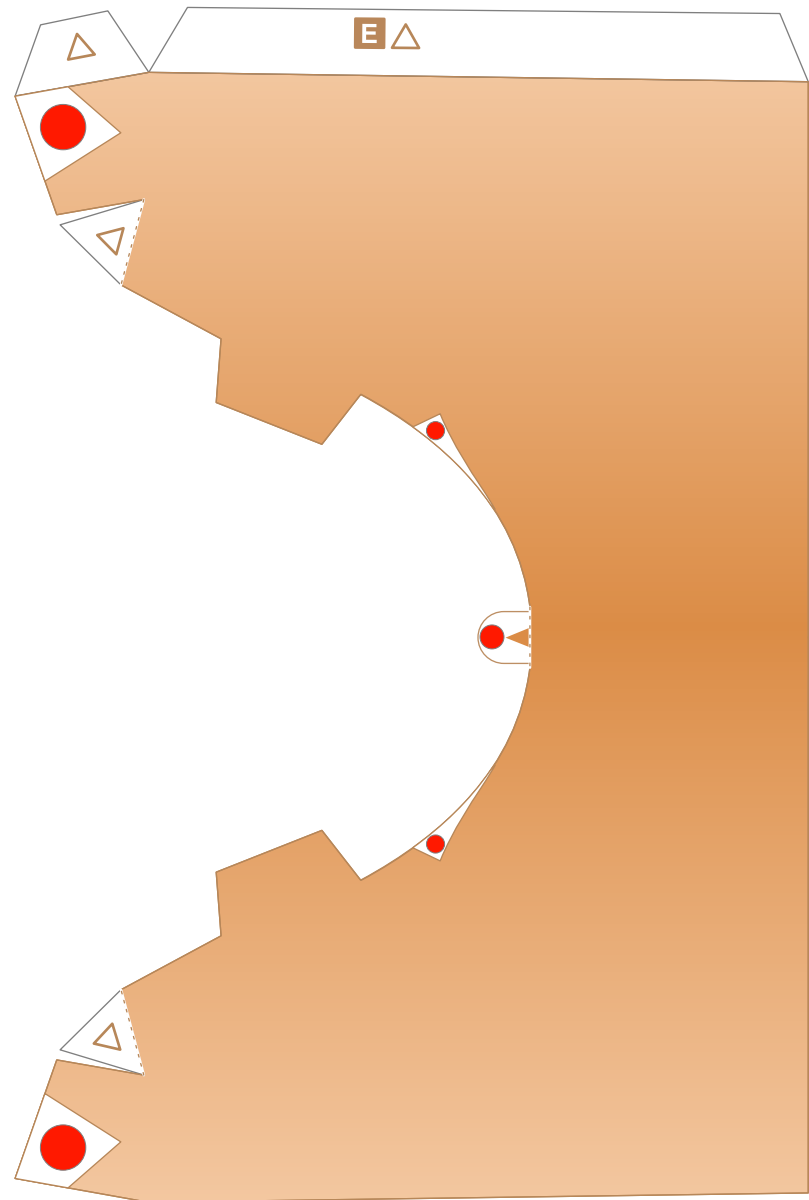
B SNOUT



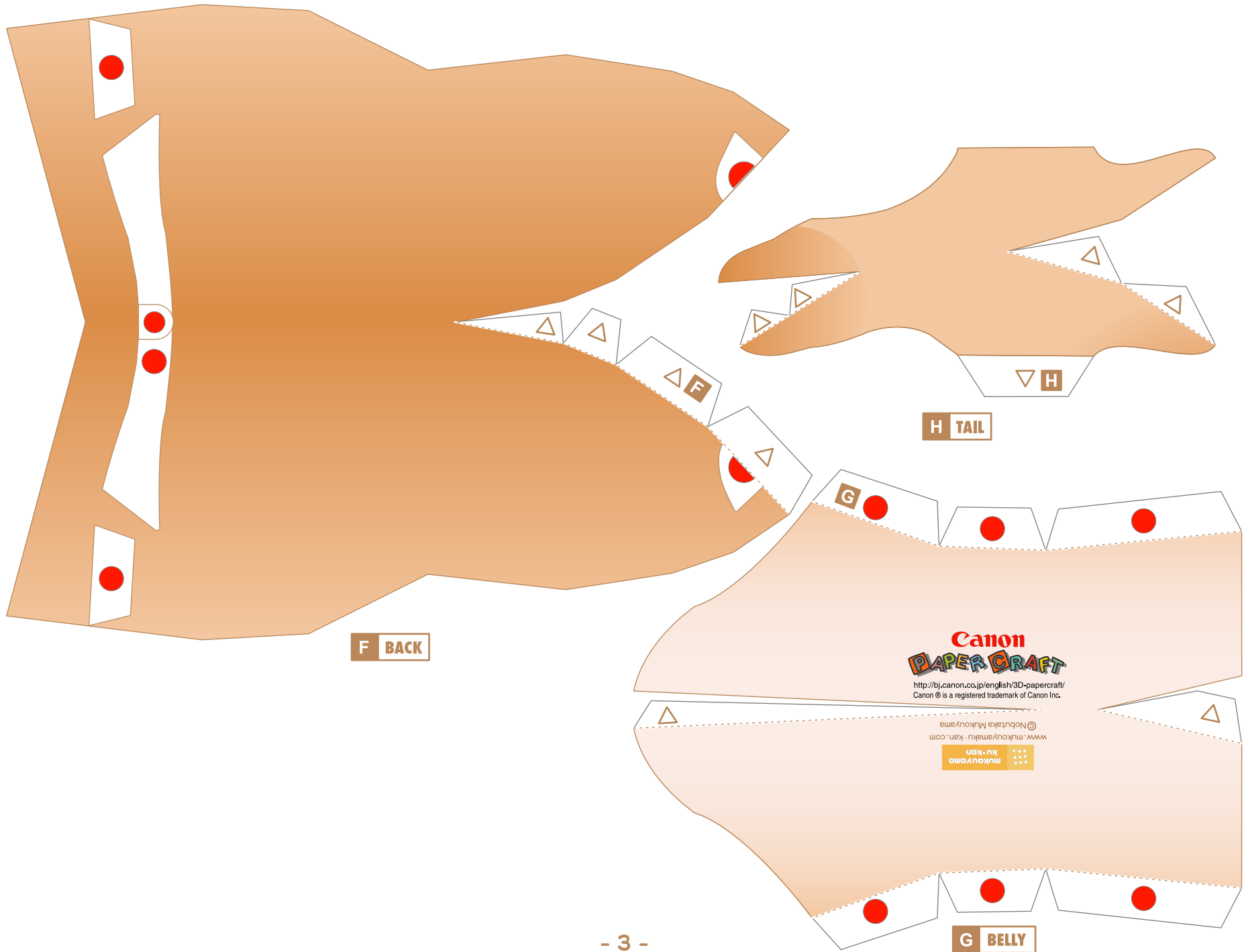
C EAR (Left)

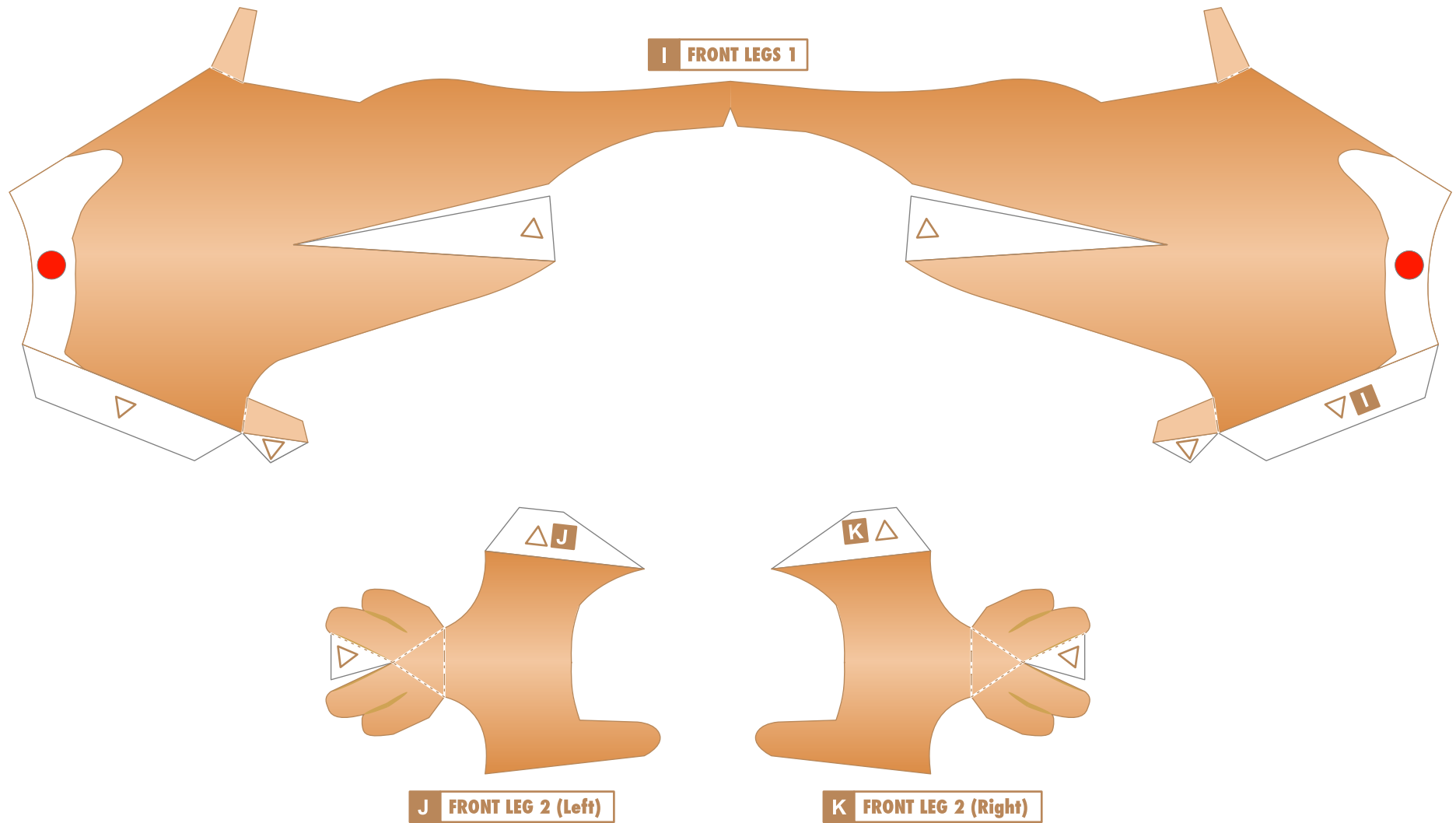


D EAR (Right)

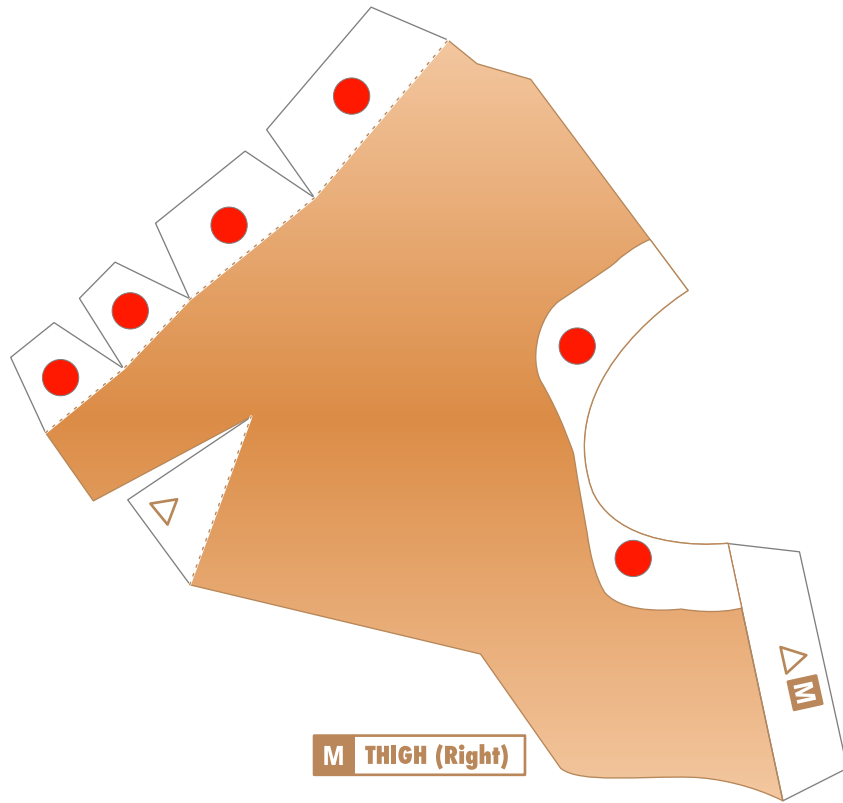


E NECK

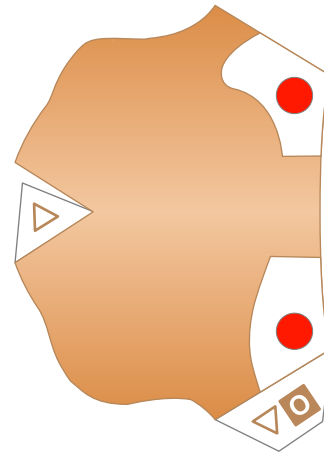




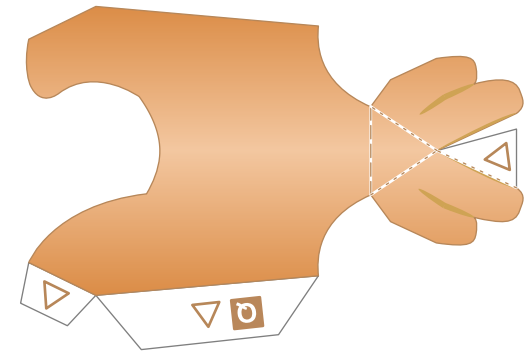




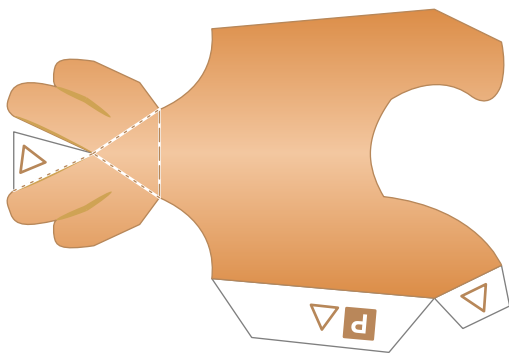
M THIGH (Right)



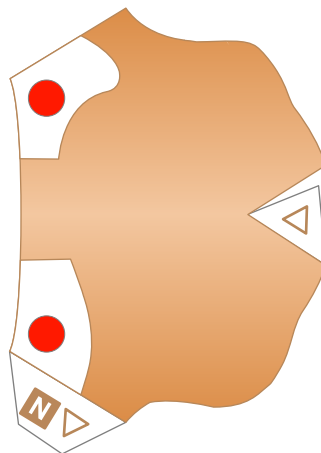
O HIND LEG 1 (Right)



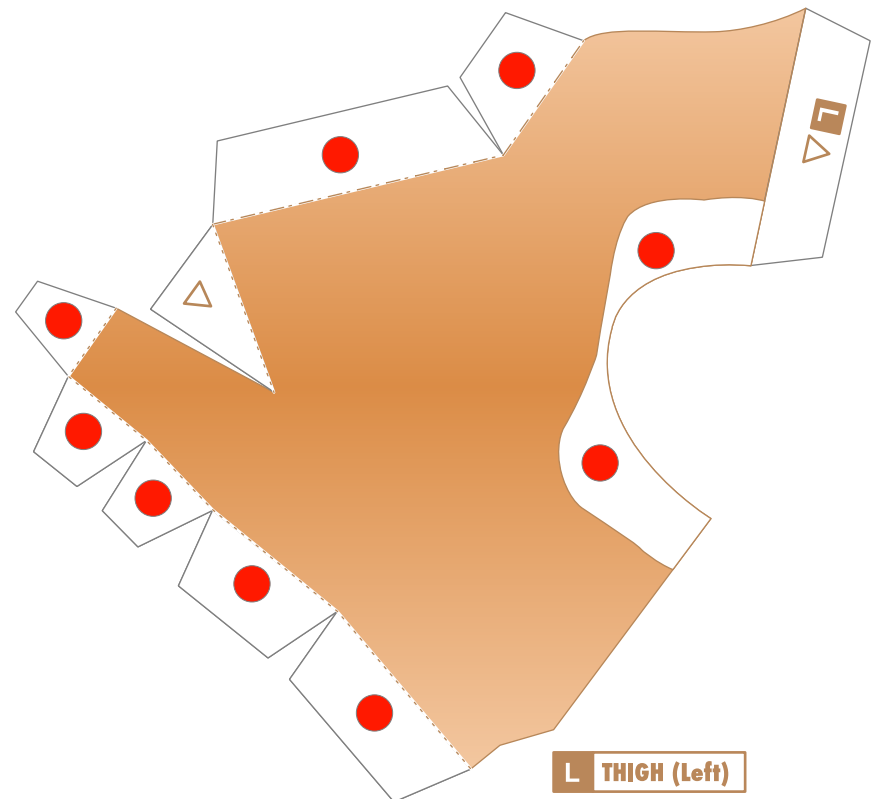
Q HIND LEG 2 (Right)



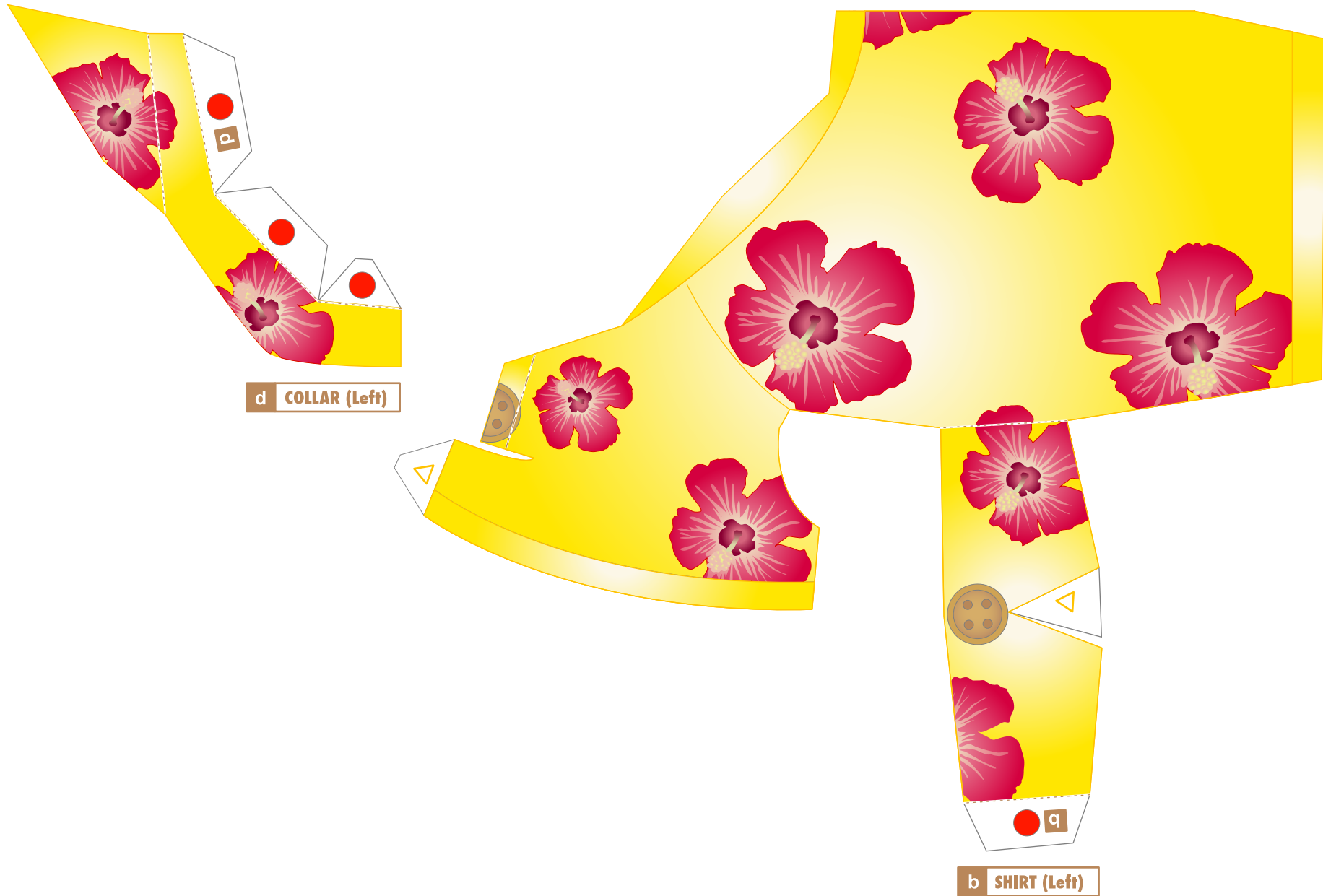
P HIND LEG 2 (Left)

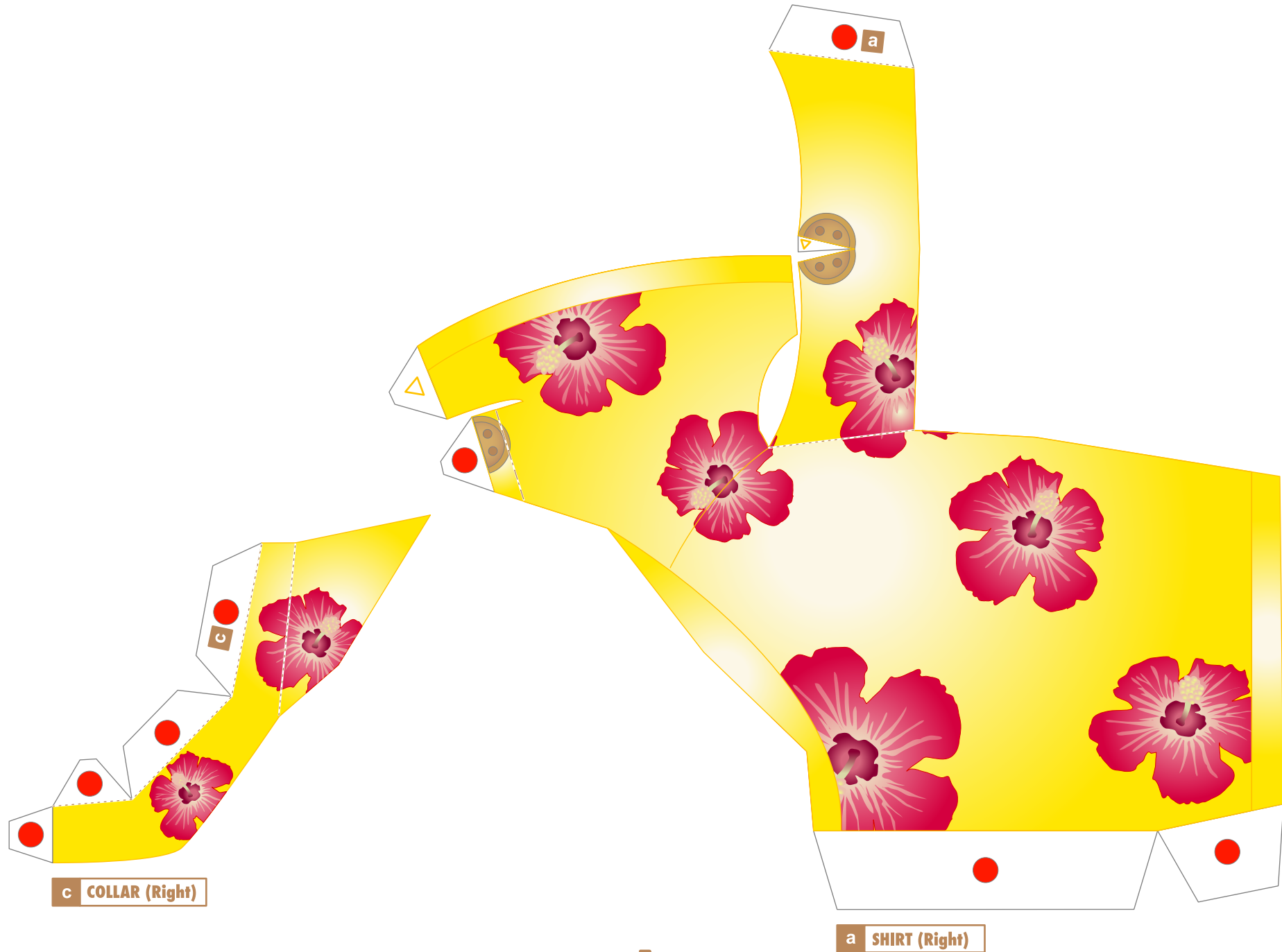


N HIND LEG 1 (Left)



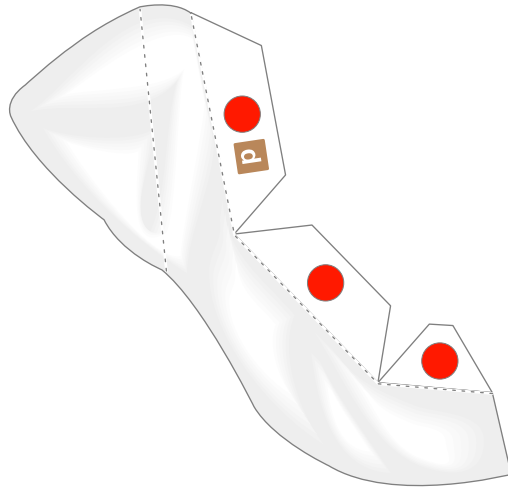
L THIGH (Left)





c COLLAR (Right)

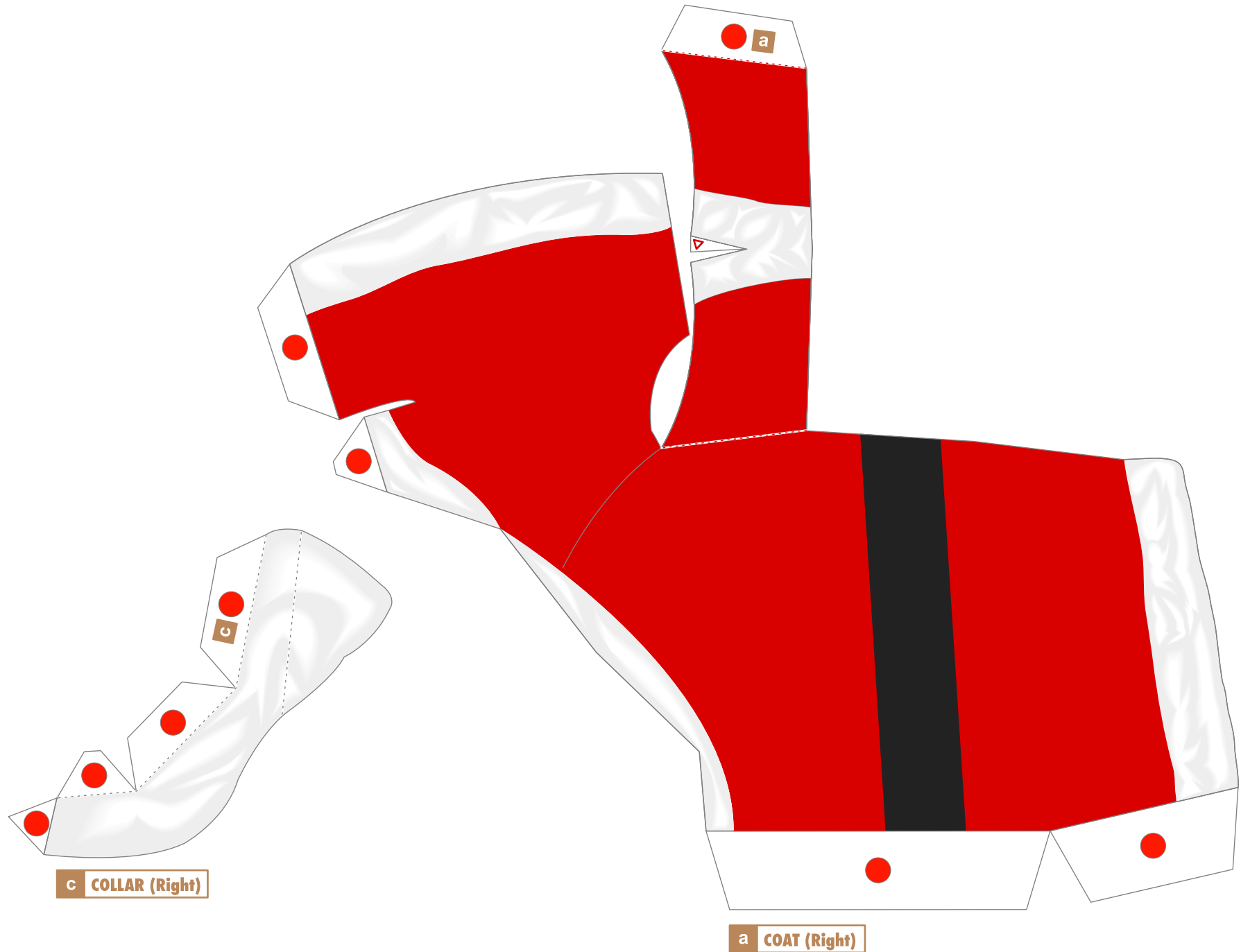
a SHIRT (Right)

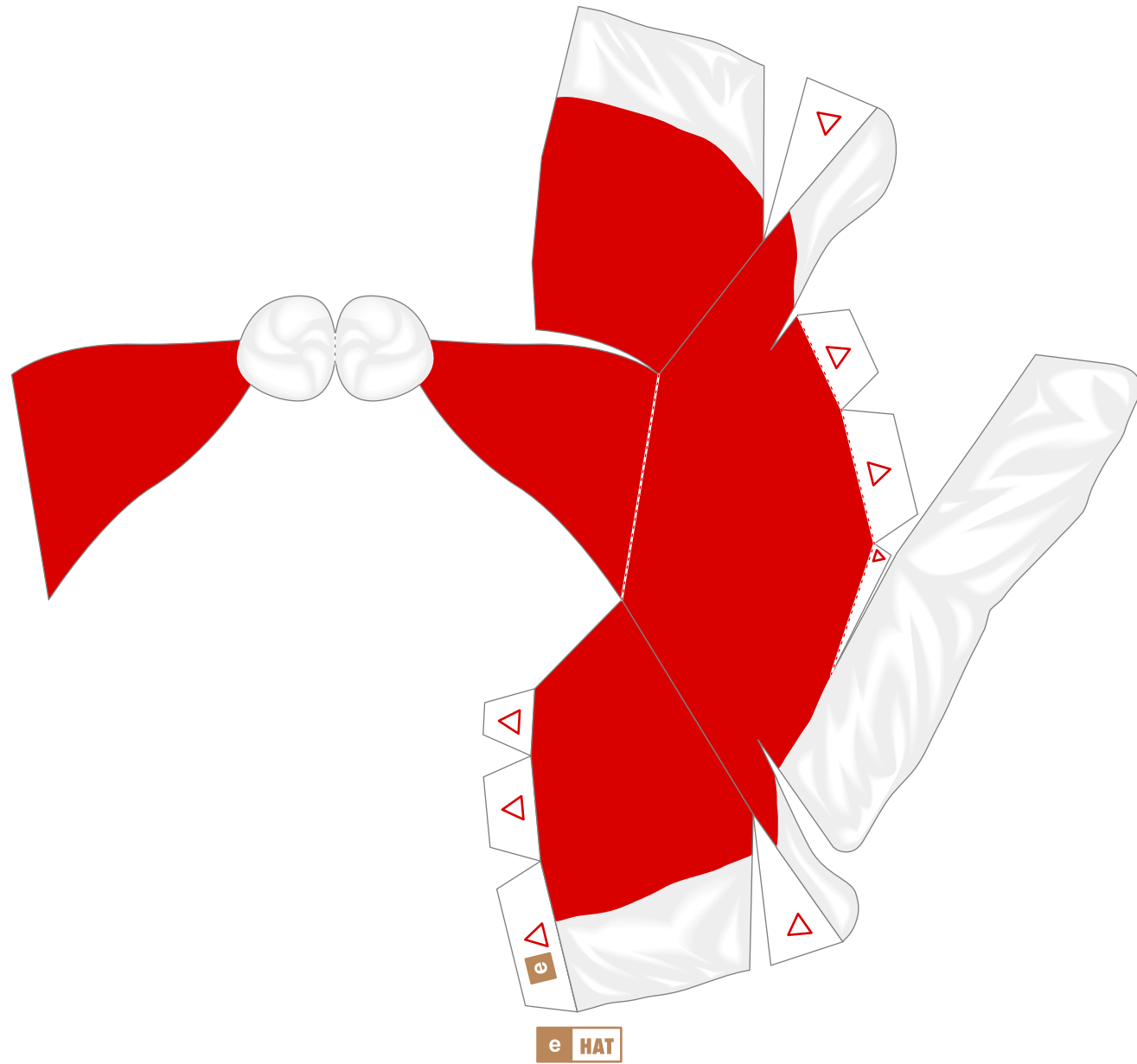


d COLLAR (Left)



b COAT (Left)







## Chihuahua (smooth coat)

**Height:** 15 to 23 cm    **Weight:** 1 to 3 kg  
**Origin:** Central and North America (United States and Mexico)  
**Personality:** Friendly, extremely curious, brave, loyal

The Chihuahua is thought to be a descendant of a breed of dog called the Techichi. The Techichi was the dominant breed in the 9th century in the area that is now Mexico. The Techichi was a pet of the Toltec people. The Techichi was not only a pet to the Toltecs and the Aztecs, but also was important for religious reasons. It was believed that if Techichi were cremated with the dead, the Techichi would take on the burden of the deceased person's sins and turn away the anger of the gods. Further, it was believed that the Techichi would protect the souls of the dead from evil spirits, and lead them to their final destination in the afterlife.

The Chihuahua of today is thought to be a cross between descendants of the Techichi and a hairless dog called the Chinese Crested Dog.

There are two types of coat found in Chihuahuas - the Long Coat variety has long hair, while the Smooth Coat variety has short hair. The hair of the Long Coat is sometimes curly.

## Assembly Instructions



----- **Mountain fold.**



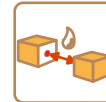
----- **Valley fold.**



———— **Cut line.**



△ **A triangle mark indicates a glue tab.**



● **A red dot indicates a glue tab to be used to glue to another part.**

### Tools and materials



Scissors, straightedge, glue (we recommend craft glue), a round stick such as a pencil (used for applying a curvature to paper).

### Assembly tip



Crease all mountain folds and valley folds before gluing, and apply curvature to curved portions.

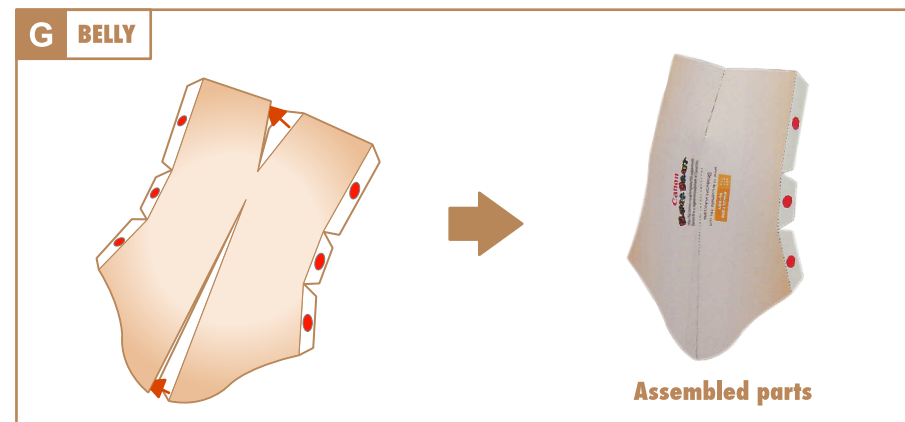
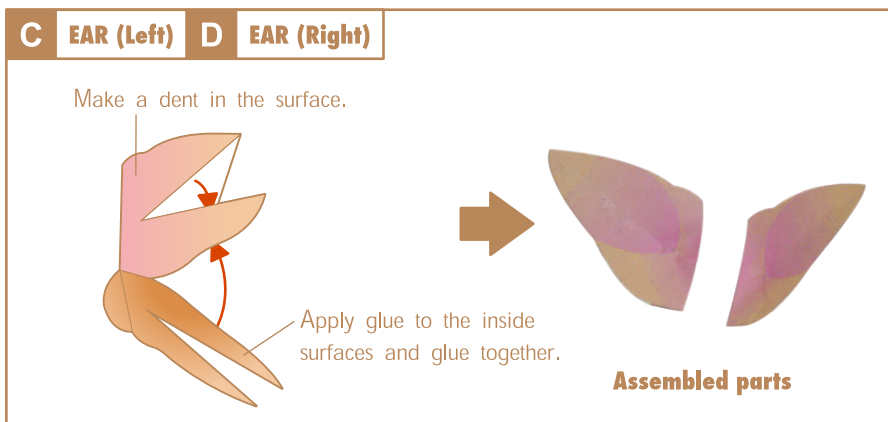
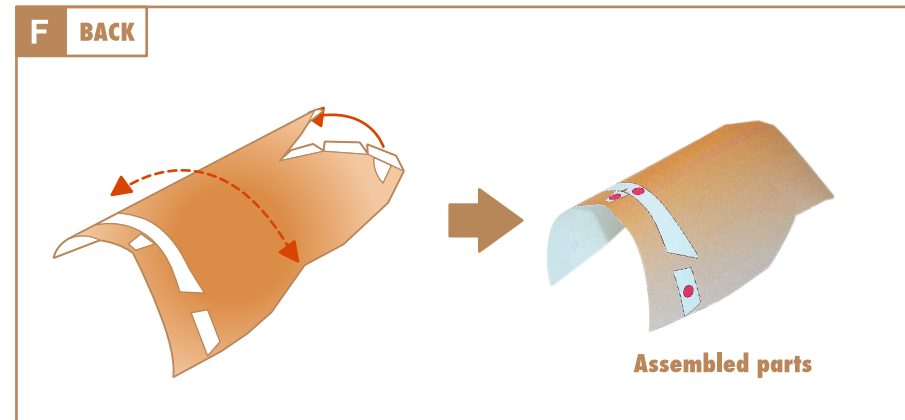
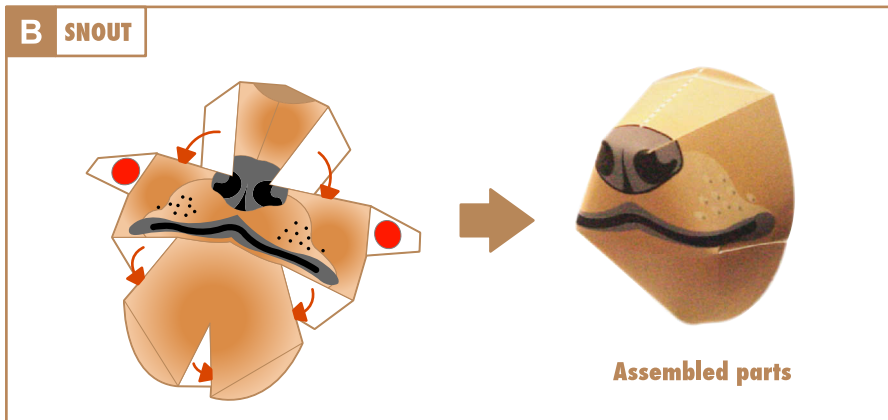
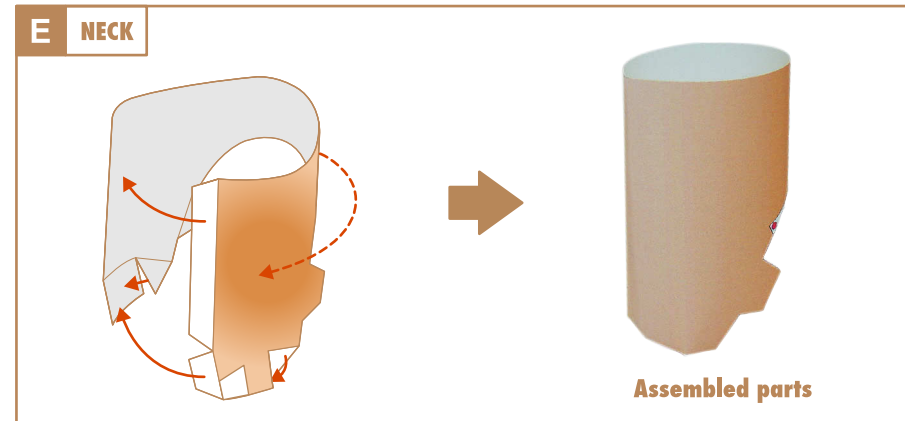
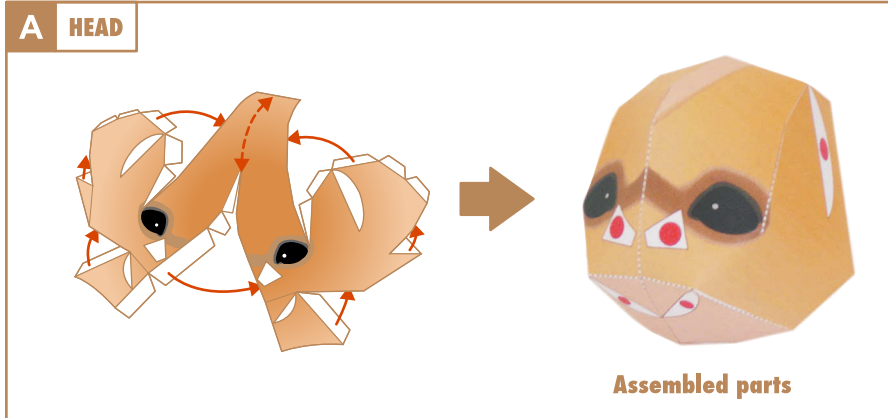
### Caution



Keep glue away from small children.

# Chihuahua (smooth coat): Assembly directions

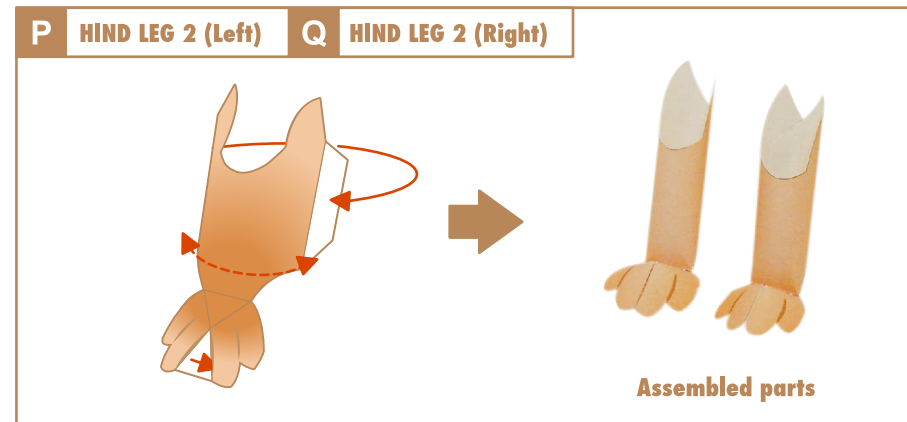
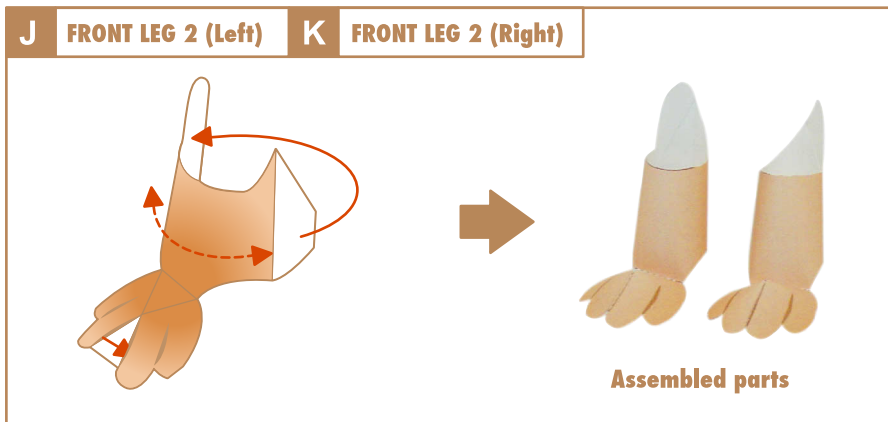
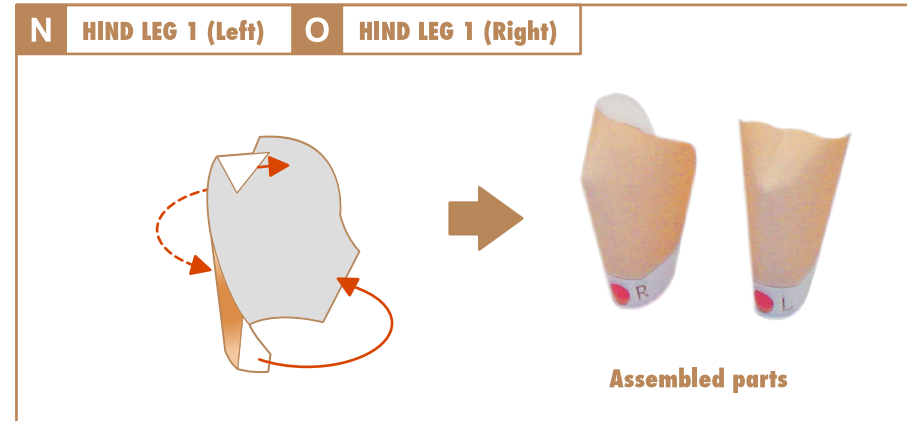
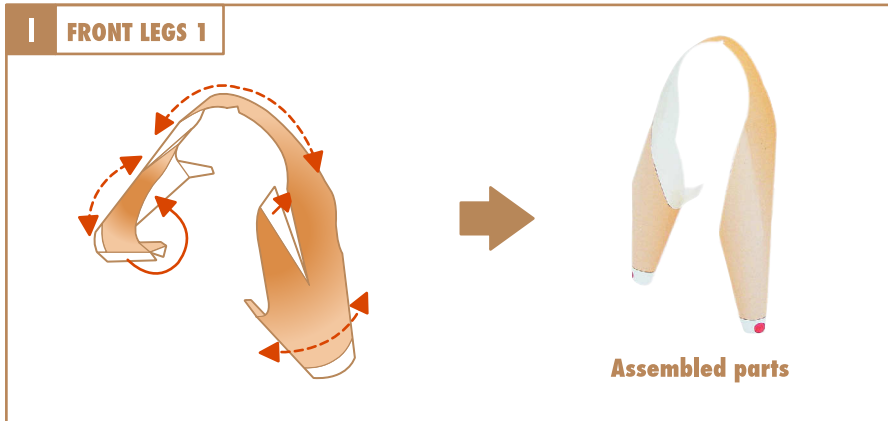
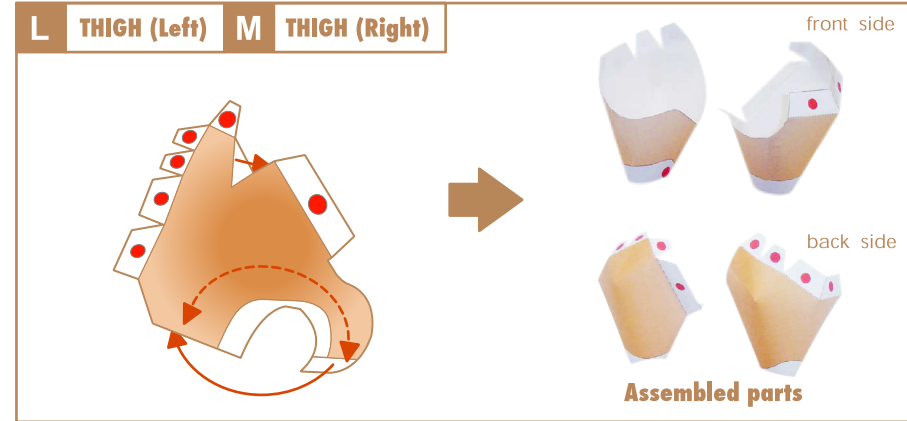
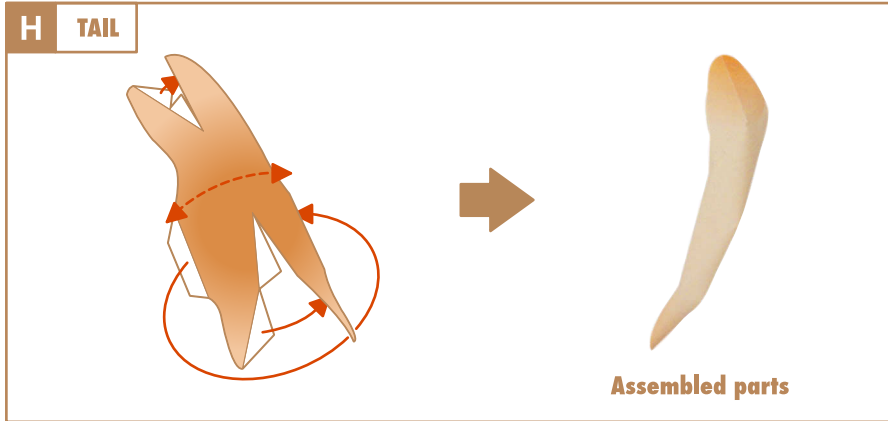
Attach → Curve - - - - -





# Chihuahua (smooth coat): Assembly directions

Attach  $\longrightarrow$  Curve  $\dashrightarrow$

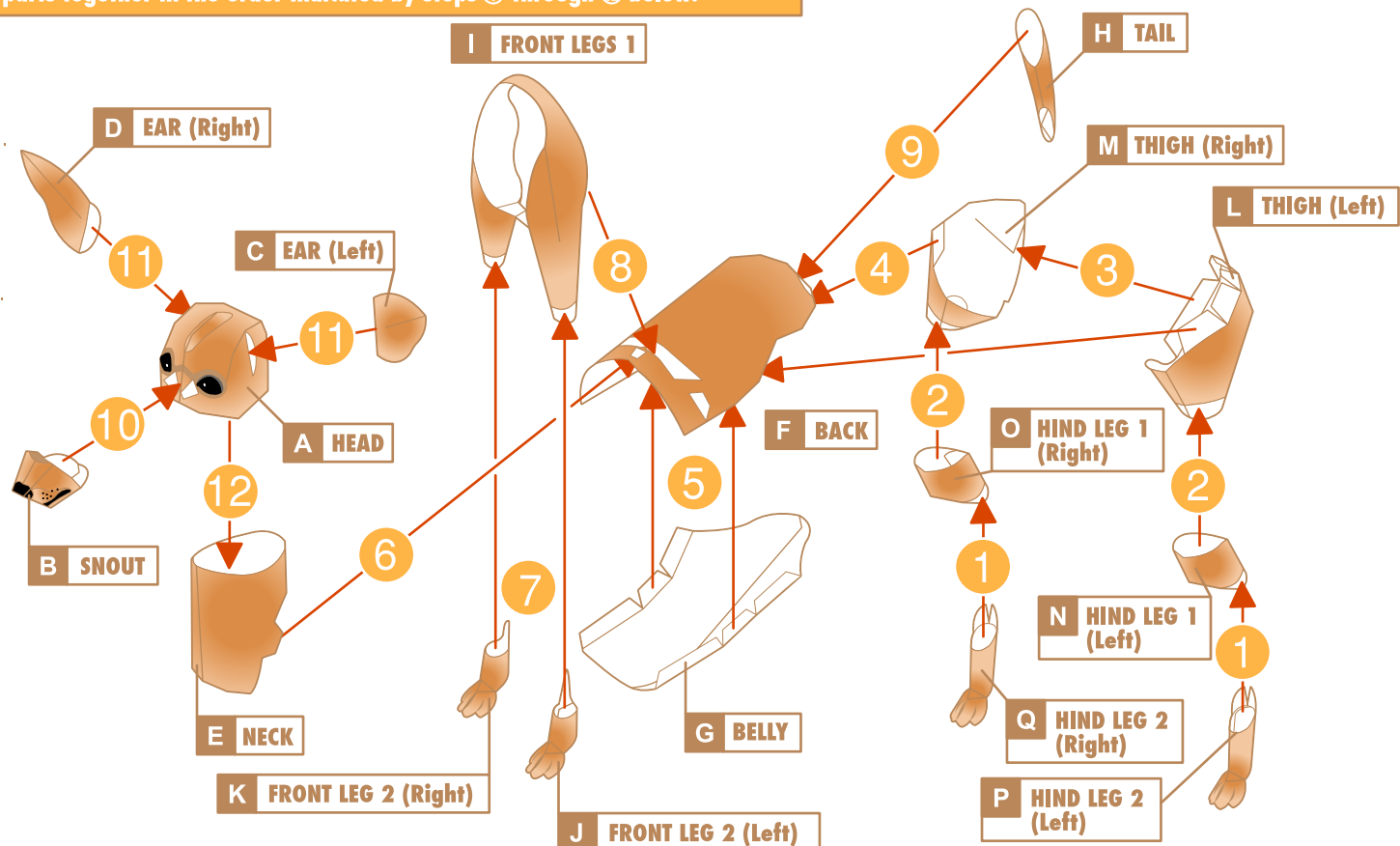


# Chihuahua (smooth coat): Assembly directions

Attach  $\longrightarrow$  Curve  $\dashrightarrow$

★ **Final assembly** Put all the parts together in the order indicated by steps ① through ⑫ below.

- ① Glue BELLY to BACK.
- ② Glue NECK to BACK.
- ③ Glue FRONT LEG 2 to FRONT LEG 1.
- ④ Glue FRONT LEGS 1 to BACK.
- ⑤ Glue HIND LEG 2 to HIND LEG 1.
- ⑥ Glue HIND LEG 1 to THIGH.
- ⑦ Glue THIGH (Right) to THIGH (Left).
- ⑧ Glue THIGHS to BACK.
- ⑨ Glue TAIL to BACK.
- ⑩ Glue SNOUT to HEAD.
- ⑪ Glue EARS to HEAD.
- ⑫ Insert HEAD into NECK.



★ **Completed photo**



You can dress me when I'm finished!  
(Directions for making my clothes are on the next

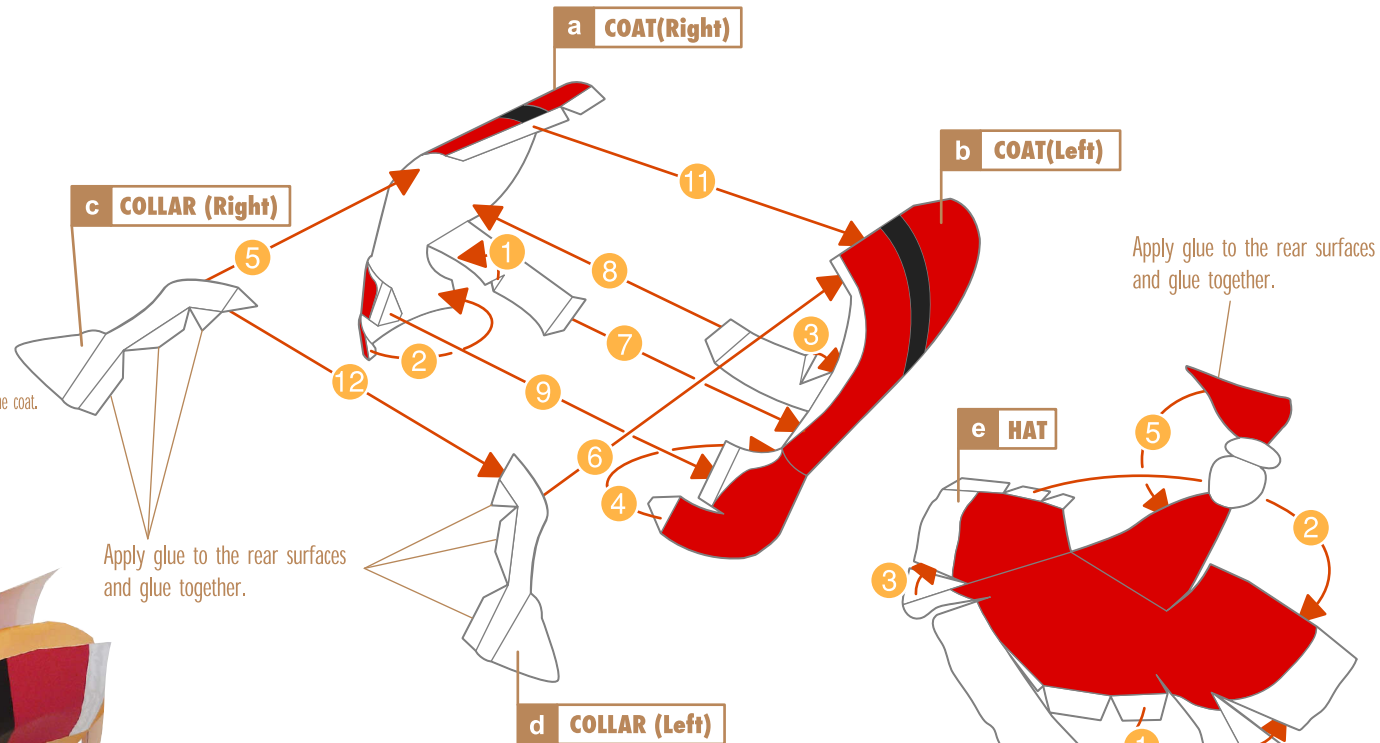


# Chihuahua (smooth coat): Assembly directions

Attach  

**★ Assembling the coat and hat** Put the parts together in the order indicated by steps ① through ⑫ below.

- ① Glue the belly section of COAT (Right).
- ② Glue the sleeve of COAT (Right).
- ③ Glue the belly section of COAT (Left).
- ④ Glue the sleeve of COAT (Left).
- ⑤ Glue COLLAR (Right) to COAT (Right).
- ⑥ Glue COLLAR (Left) to COAT (Left).
- ⑦ Glue the belly section of COAT (Right) to COAT (Left).
- ⑧ Glue the belly section of COAT (Left) to COAT (Right).
- ⑨ Glue the collar fronts of COAT (Left) and COAT (Right) together.
- ⑩ Insert the Chihuahua's front legs through the sleeves to put on the coat.
- ⑪ Glue the back seam of COAT (Left) and COAT (Right) together.
- ⑫ Glue the back of COLLAR (Right) and COLLAR (Left) together.



**★ Completed photo**



Make me a Hawaiian shirt, too!  
(Assemble the Hawaiian shirt in the same manner.)

